



**BEAUSEJOUR  
BROKENHEAD**  
DEVELOPMENT CORPORATION



A partnership of the Town of Beausejour  
and Rural Municipality of Brokenhead



*Friendly*  
**BEAUSEJOUR**

# COMMUNITY PROFILE



204-268-4514 639 Park Ave  
bbdc@bbdcbiz.ca Beausejour, MB  
bbdcbiz.ca R0E0C0

# Contents



## 02

### OUR HOME YOUR HOME Welcome to Beausejour Brokenhead

Location, Population..... **02**  
Immigration, Business  
Opportunity, Weather,  
Quality of life..... **03**



## 08

Housing, Health & Safety  
Services, Beausejour District  
Hospital, Beausejour Primary  
Health Care Centre, Fire  
Services, Royal Canadian  
Mounted Police, Joint Local  
Emergency Response Control  
Group ..... **08**



## 12

### BEAUSEJOUR BROKENHEAD DEVELOPMENT CORPORATION

Mission, Vision, Value  
Statements, Contact info..... **12**



## 06

### LIVE IN BEAUSEJOUR BROKENHEAD

#### Education

Sunrise School Division, École  
Beausejour Early Years School  
(EBEYS), Gillis School, École  
Edward Schreyer School  
(ÉESS), Adult Education &  
Post Secondary, Agassiz Adult  
Education Centre, Eastman  
Vocational Training Centre  
(EVTC) ..... **06**

#### Educational Attainment ..... **06**



## 10

### EXPLORE BEAUSEJOUR BROKENHEAD

Brokenhead River Recreation  
Commission, Trans Canada  
Trail, Train Whistle Park  
& The Rail Trail, Wally  
Chryplywy Nature Park,  
Daylily Gardens, Summer  
Farmers Markets, Manitoba  
Glassworks Historic Site,  
Canadian Power Toboggan  
Championships Raceplex,  
Shades of the Past Annual  
Car Show ..... **10**

Double B Ag Festival,  
Haystack Productions,  
Brokenhead River Regional  
Library, Pioneer Village  
Museum, Sandy Saulteaux  
Spiritual Centre, Recreation  
Facilities, Beausejour Splash  
Aquatic Centre, Tyn dall  
Village Community Centre  
Splash Pad, Snowmobiling,  
Golfing, Just a Short Drive to  
Whiteshell Provincial Park,  
Local Directory ..... **11**



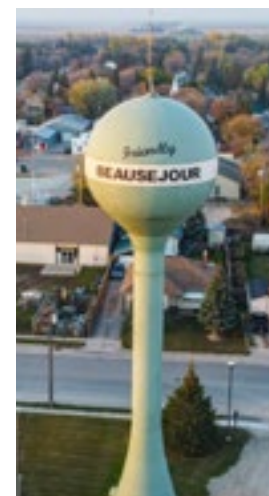
## 04

### INVEST & WORK IN BEAUSEJOUR BROKENHEAD

#### Building a Better Tomorrow Together

Investment Opportunities  
RM of Brokenhead Industrial  
Development, Beausejour  
Industrial Park, BDO Zone  
Rating ..... **04**

Relocating to Beausejour  
Brokenhead, Labour Force,  
Entrepreneurship, Filming in  
Beausejour/Brokenhead. **05**



**30 KMS**  
from  
**BROKENHEAD**  
to Winnipeg

Since 2001  
**BEAUSEJOUR  
BROKENHEAD**  
Region has grown  
by over  
**35%**

**9-10%**  
of the population  
are in the health field  
SEE MORE ON  
**PAGE 7**

**95%**  
of the population  
are home owners  
SEE MORE ON  
**PAGE 8**

Explore the  
many activities of  
**BEAUSEJOUR  
BROKENHEAD**  
has to offer ON  
**PAGE 10**

# OUR HOME YOUR HOME

## Welcome to Beausejour Brokenhead

Nestled in the Eastman region of Manitoba, just 45 kilometers northeast of Winnipeg, lies the Beausejour Brokenhead region. With years of rich history, this ever-growing area is an ideal location to plant your roots. Whether you are aiming to invest or simply want to enjoy everything that rural living has to offer, Beausejour Brokenhead could be just what you've been looking for.

The Rural Municipality of Brokenhead encompasses various communities, including the Local Urban District of Tyndall-Garson, Cloverleaf, Cromwell, Green Bay, Hazelglen, Ladywood, Lydiatt, and St. Ouens. The Town of Beausejour, is an independent municipality, although is situated within the boundaries of Brokenhead.

Rooted in agriculture, Beausejour Brokenhead is the cornerstone of Eastern Manitoba and your commercial development destination. With a stable population growth and low operational costs, you are positioned for business success in our investment-ready community. The region provides the perfect opportunity to not only live and

work in Beausejour Brokenhead, but to thrive while doing so.

### Location

Beausejour Brokenhead is a short 40-minute drive away from Winnipeg – Manitoba's largest city. Easily accessible by divided double-lane RTAC (Roads and Transportation Association of Canada) highways, PTH (Provincial Trunk Highway) 59 and PTH 44. RTAC

highways can support the heaviest regulated loading classification and have no seasonal restrictions, allowing for convenient transportation.

Beausejour Brokenhead provides a unique opportunity, being about equal distance from a major city as well as the gorgeous Manitoba Whiteshell. Our central location allows for all the modern amenities while

experiencing the peacefulness of rural living and the close access to recreational opportunities.

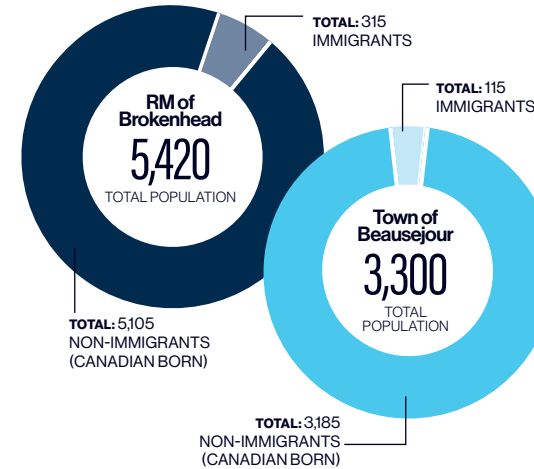
### Population

Beausejour Brokenhead has seen a steady increase in population over the last decade and is on track to grow to a total population of 10,000 residents by 2036.

**WHETHER YOU ARE AIMING TO INVEST OR SIMPLY WANT TO ENJOY EVERYTHING THAT RURAL LIVING HAS TO OFFER, BEAUSEJOUR BROKENHEAD COULD BE JUST WHAT YOU'VE BEEN LOOKING FOR.**

### Immigration

Beausejour Brokenhead is a culturally diverse area, with majority of residents coming from European descent. Many families have been settled in the region for multiple generations, but the area continues to welcome newcomers to the community.



### Business Opportunity

Enjoy a favourable business environment, including competitive land costs, reasonable construction rates, affordable taxes, and streamlined permitting processes. Grow your business with a productive, well educated and multilingual labor force that consistently generates an unemployment rate among the lowest in Canada, and amongst the highest labor force participation in Canada.

Generate returns on your investment with published electricity rates among North America's lowest through highly reliable renewable and environmentally desirable hydroelectricity on an advanced and extensive electric connectivity grid. Stay connected on communication networks which

include over 75,000 strand kilometers of fibre-optic cable and high-speed, high density broadband infrastructure.

The Central Standard time zone is an advantage for service sector businesses, with Daylight Savings Time in effect from March through November.

### Weather

Beausejour Brokenhead experiences four distinctive seasons, each providing their own unique strengths and opportunities for enjoyment.

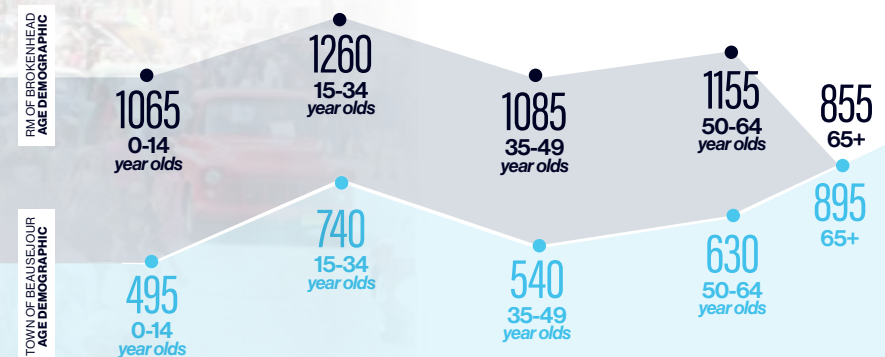
MONTHLY AVERAGES	WINTER	SPRING	SUMMER	FALL
Average Hi °C	-1° to -11°	7° to 22°	20° to 25°	0° to 10°
Average Lo °C	-10° to -19°	-2° to 12°	10° to 15°	-6° to 3°
Average Precipitation	15 to 25mm	45 to 100mm	84 to 100mm	25 to 47mm
Average Hours of Sun	47 to 68	119 to 236	214 to 249	109 to 144

Source: weatherworld.com

### Quality of Life

Beausejour Brokenhead not only provides a convenient investment location, but also a variety of basic amenities, community services, recreational opportunities for all ages, health care, education, and more that make it a wonderful community for our residents and visitors alike.

The Beausejour Brokenhead region is a vibrant, sustainable, strong family-oriented, age-friendly community with an abundance of business, housing, health, education, and services. Embrace our shared vision as we nurture and expand our vibrant community. Welcome to Beausejour Brokenhead – Our Home, Your Home.



**45 km**

**Beausejour to Winnipeg**

63kms to WINNIPEG RICHARDSON INTERNATIONAL AIRPORT  
57kms to VIA RAIL TRAIN STATION  
115kms to U.S. BORDER IN TOLSTOI



# INVEST AND WORK IN BEAUSEJOUR BROKENHEAD

## Building a Better Tomorrow Together

In Beausejour Brokenhead, we know that a strong business community is key to a thriving and healthy community overall. For this reason, we welcome investors and businesses – big or small! – and provide support in any way we can. Whether through business resources or relocation support and helping you settle into the community, we're here to assist however we can to make your transition to the area as successful as possible.

Rooted in agriculture, Beausejour Brokenhead is the cornerstone of Eastern Manitoba and your commercial development destination. With stable population growth and low operational costs, you are positioned for business success in our investment-ready community.

Well-situated along a safe and convenient transportation corridor, Beausejour Brokenhead is accessible from Winnipeg by divided twinned highways PTH 59 and PTH 44.

Offering cost-effective links to facilities providing shipping by road, rail, sea, and air, Beausejour Brokenhead is strategically located in a mid-continental location. Only 30 minutes by road to the Trans-Canada highway, 45 minutes to James Richardson International Airport and CentrePort Canada - North America's largest trimodal inland port and Foreign Trade Zone - and 1.5 hours to the USA border. Beausejour Brokenhead is accessible to Canadian, US, and international trade centres on a reliable transportation network.

Boasting many successful and growing businesses such as Cobra Construction, Co-Op, Perfect Pierogies, Home Hardware and more, Beausejour Brokenhead is proven to be an investment positive community for businesses big and small.

## Investment Opportunities

### RM of Brokenhead Industrial Development

Located just outside of Garson, there are large parcels of land that have been zoned for industrial use. Providing prominent exposure along Highway 44, this land has services readily available, allowing

both users and investors the opportunity to develop the site for their specific use.

Our region has a variety of other lots available that have the potential to be rezoned for industrial use. We encourage those interested to reach out for further information on other property options.

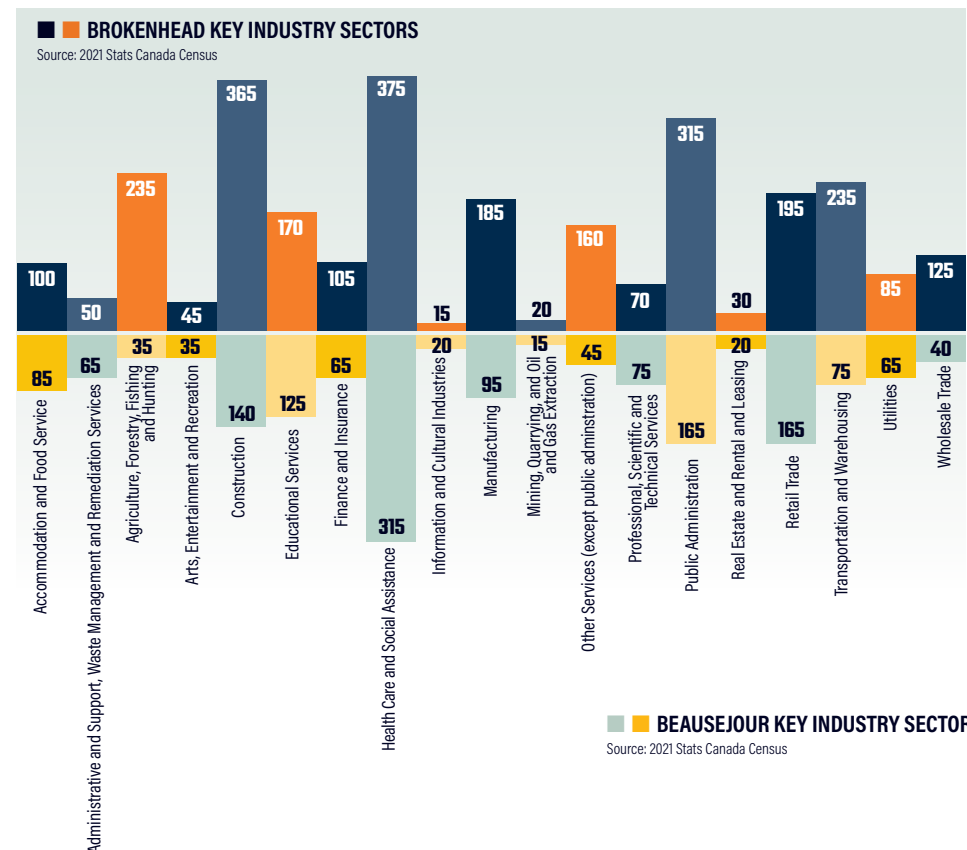
### Beausejour Industrial Park

The Town of Beausejour is at the forefront of commercial and industrial expansion in Eastern Manitoba. The Beausejour Industrial Park is situated 46 km East of Winnipeg on PTH 44, only 45 minutes to CentrePort and 1.5 hours to the USA border on divided RTAC highways. Beausejour Industrial Park is conveniently located to support trade and business growth, offering affordable lots

serviced with water, sewer, hydro, and gas.

### BDO Zone Rating

The Biofuel Development Opportunity (BDO) Zone Rating is an internationally recognized assessment that helps developers and investors recognize regions that are bio-manufacturing ready. Beausejour Brokenhead received Manitoba's first Wheat Straw 'A' rating, showcasing that our area has high prospective viability and capacity to support new biobased plant operations with low risk. Our region has a history rooted in agriculture and is eager to build off this foundation by partnering with biobased companies, further bringing economic opportunities to our community.



### Relocating to Beausejour Brokenhead

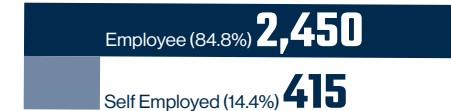
Our community has numerous housing developments in the works ready to accommodate employees and their families moving to the area.

Our region is full of future development opportunities, including potential for highway commercial development in Tyndall Garson. To promote healthy lifestyles, future development of active transportation routes within Tyndall Garson will allow employees to have the option of biking or walking to work rather than driving.

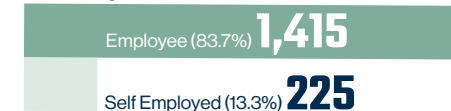
We strive to make relocation for businesses, and their employees and families into our community as smooth as possible by ensuring housing, childcare, and additional amenities are available. Details on these resources can be found throughout the following pages.

With the goal of creating more opportunities for our community, we aim to support a wide variety of sectors within our region. Whether this is through larger companies looking to relocate to our area and capitalize on our growing labour force, home-based businesses, or work-from-home opportunities, we are always working towards expanding the sectors and resources available within our community.

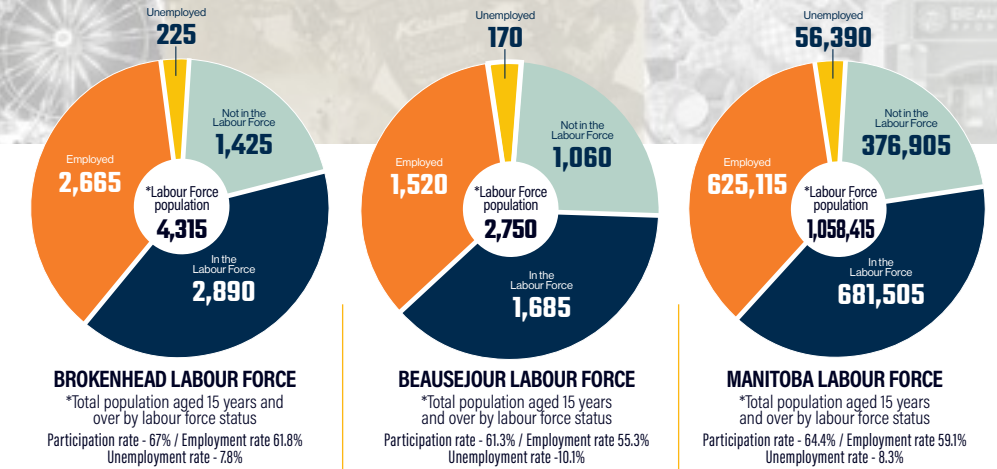
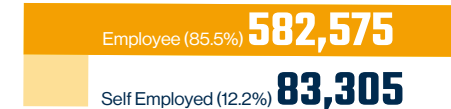
### Brokenhead



### Beausejour



### Manitoba



### Labour Force

With our well-educated, growing population, Beausejour Brokenhead is an ideal location to start up or expand your business in. Our labor force consistently generates an unemployment rate among the lowest in Canada, and one of the highest participation rates in Canada.

### Entrepreneurship

We strive to support entrepreneurial minds to create the businesses of their dreams. With support and resources available, we aim to assist all businesses and entrepreneurs regardless of their current size to help make their goals a reality. With 13.3% of people in Beausejour and 14.4% of people in RM of Brokenhead identifying as self-employed, both higher than the Manitoba rate, our goal is to support these groups in their plans and hope to see this number continue to grow.

### Filming in Beausejour Brokenhead

With grants available both provincially and federally, and additional bonuses available for productions filmed in rural areas, Beausejour Brokenhead provides a unique backdrop for your next film.

Most recently we welcomed the actors and crews filming *Dark Harvest* and *The Long Walk* to our area. Our small-town feel, open farmland, and stretches of prairie highway provide endless opportunity for all movie genres.



- Dark Harvest
- The Long Walk
- Heaven is for Real
- The Outside chance of Maximilian Glick
- Flag Day



# LIVE IN BEAUSEJOUR BROKENHEAD

Beausejour Brokenhead is the ideal balance between peaceful rural living and modern amenities. There's something so special about living in a small community where everyone knows their neighbours and community events are the norm, all while having easy access to basic amenities, and being just a short commute away from Winnipeg.

## Education

With our youth being the future of our community, we prioritize quality education, exemplified by our comprehensive K-12 French immersion program offered through Sunrise School Division. With daycare and preschool options located right inside our early years schools, we support local families, every step of the way.

### Sunrise School Division

Sunrise School Division serves one of the most beautiful areas of Manitoba, stretching from the sprawling farmlands just east of Winnipeg to the fabulous cottage country of eastern Manitoba. In Beausejour Brokenhead, this includes the communities of Beausejour, Garson, Tyndall and the RM of Brokenhead.

Through Manitoba's School of Choice Initiative, parents can also apply for their child to attend a different school within or outside of the catchment area, should that better suit their needs. More information can be found on the Sunrise School Division website and [edu.gov.mb.ca](http://edu.gov.mb.ca).

☎ [sunrisesd.ca](http://sunrisesd.ca)

### École Beausejour Early Years School (EBEYS)

Each day, École Beausejour Early Years School, located in Beausejour, welcomes over 480 students in kindergarten through grade 5, from the Town of Beausejour and RM of Brokenhead, plus over 30 staff committed to providing an exceptional student experience.

☎ [beausejour.sunrisesd.ca](http://beausejour.sunrisesd.ca)

The École Beausejour Early Years School is also home to the Beausejour Kids Centre, with 60 spaces for children aged 12 weeks to 12 years, and the Happy Time Nursery School

Co-op, a pre-school for three & four-year-old children meant to foster early educational development.

☎ [beausejourkidscentre.com](http://beausejourkidscentre.com)  
☎ [happytimenursery.com](http://happytimenursery.com)

### Gillis School

Gillis School, located in Tyndall, is a Kindergarten to Grade 6 English school with a student population of approximately 200 students from the surrounding communities of Tyndall and Garson, plus 30 staff committed to providing an outstanding educational experience.

☎ [gillis.sunrisesd.ca](http://gillis.sunrisesd.ca)

Gillis School is also home to the Gillis Play and Learn Center, a 65-space centre for children aged 12 weeks to 12 years. As of 2024, the centre is proud to offer an additional 74-spaces in a satellite centre also located in Tyndall, to support the families in our growing communities.

☎ [gillisplayandlearn.com](http://gillisplayandlearn.com)

### École Edward Schreyer School (ÉESS)

École Edward Schreyer School (ÉESS) welcomes over 700 students from grade 6 through to grade 12, plus over 85 staff. This dual track school offers English & French Immersion, and many opportunities to students beyond the basic core subjects, including Symphony Orchestra, Curling Academy, Apprenticeship, Industrial Arts, Home Economics, Technology, Business Education, Special Education, and more.

☎ [edward.sunrisesd.ca](http://edward.sunrisesd.ca)

### Adult Education & Post Secondary

Beausejour Brokenhead is conveniently situated for a seamless commute to post-secondary institutions in both Winnipeg and Selkirk, which includes University of Winnipeg, University of Manitoba, Red River College, Herzing College, and many other learning opportunities.

### Agassiz Adult Education Centre

The Agassiz Adult Education Centre located in Beausejour, removes barriers for adult learners (19+) looking to graduate with a

Mature Student High School Diploma or to upgrade their courses to prepare for attending post-secondary or for employment purposes.

☎ [adultlearning.sunrisesd.ca](http://adultlearning.sunrisesd.ca)

### Eastman Vocational Training Centre (EVTC)

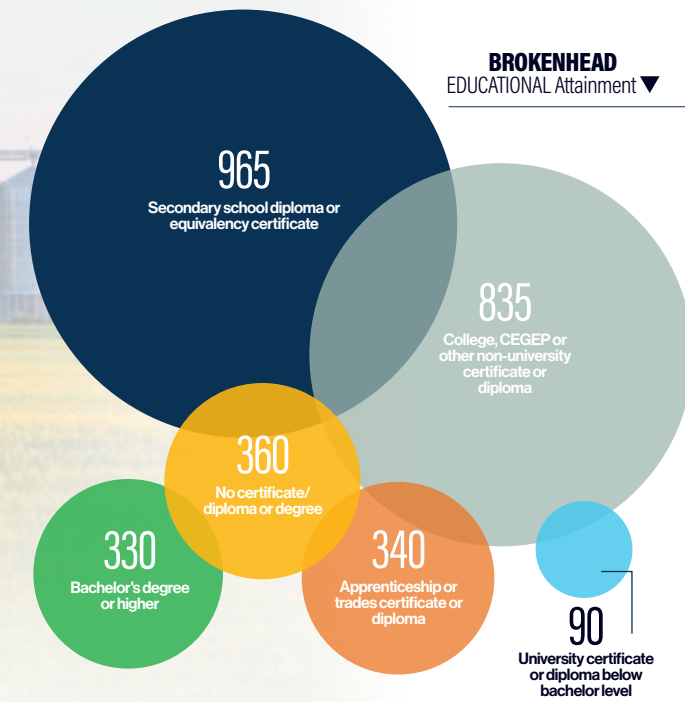
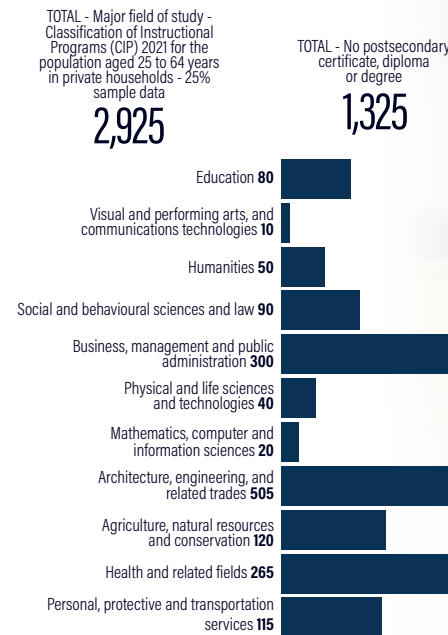
The Eastman Vocational Training Centre is an initiative spearheaded by the Beausejour Brokenhead Development Corporation. Through partnerships with accredited institutions, we offer post-secondary and vocational training within our communities to reduce barriers and encourage educational attainment in residents of the North Eastman region.

## Educational Attainment

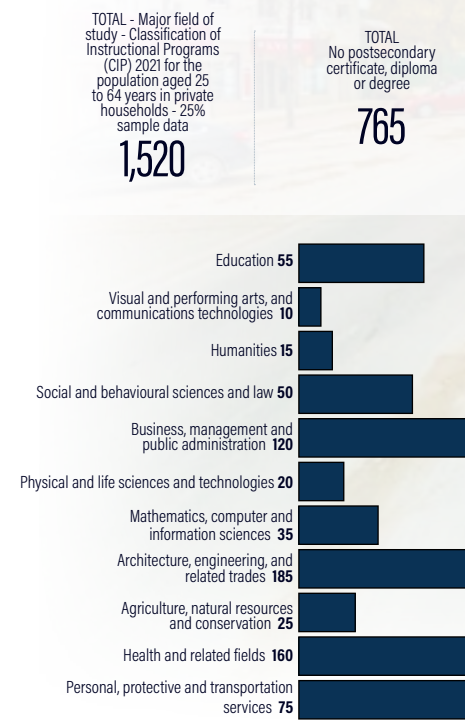
Beausejour Brokenhead residents prioritize the improvement of their knowledge by pursuing higher education in their chosen expertise. Our residents are educated in a variety of fields including business management, health, engineering, education, and more, all of which contribute to a healthy community.



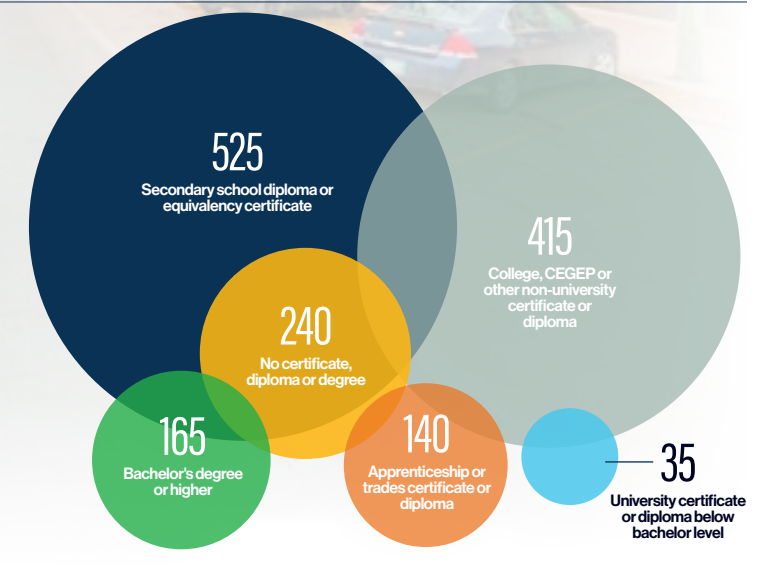
### BROKENHEAD EDUCATION by major ▼



### BEAUSEJOUR EDUCATION by major ▼



### BEAUSEJOUR EDUCATIONAL Attainment ▼





## Housing

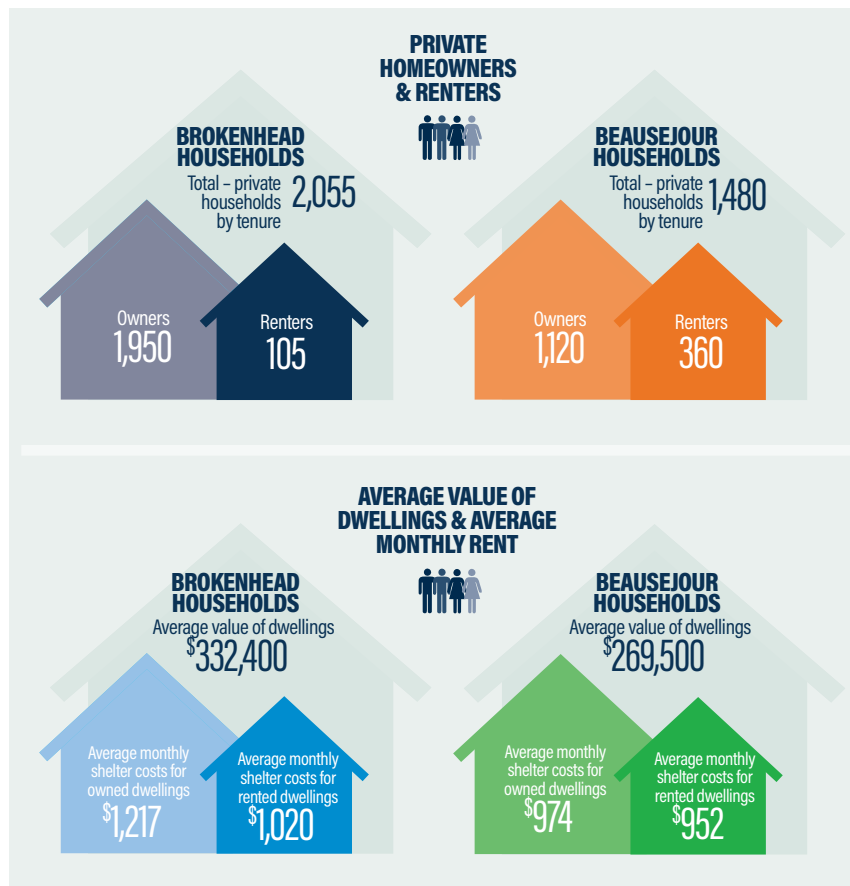
Source: 2021 Stats Canada Census

Beausejour Brokenhead real estate costs are generally lower than the Manitoba average with new housing developments available in Beausejour, Tyndall, and Garson. With an abundance of new houses, rentals and retirement housing options coming to market, you are sure to find the perfect place to call home in Beausejour Brokenhead, at an affordable price point.

In partnership with Canada Mortgage and Housing Corporation, the RM of Brokenhead is participating in the Housing Accelerator Initiative to promote affordable housing construction within the municipal to accommodate average family incomes. This will provide access to new, affordable housing while still being within commuting distance from a number of local resources as well as a major city.

## Health & Safety Services

With its central location in North Eastern Manitoba, Beausejour has assumed the role of the primary health care service providing centre. Medical clinics, dental offices, a dentist, an optometrist office, massage therapists, a physiotherapist and chiropractic services are also available within the Town of Beausejour, serving residents throughout the region.



## Beausejour District Hospital

This 30 bed acute care facility seeks to provide the highest standard of care, exercising a genuine compassion for the welfare of its patients. Located in Beausejour at 151 First Street South.

## Beausejour Primary Health Care Centre

Attached to the Beausejour District Hospital, this health care centre offers a wide range of services in response to the needs of community residents. Services available include the following; Occupational Therapy, Mental Health, Home Care Case Coordination, Home Care Resource Coordination, a Public Health Nurse, Primary Care Nurse

Practitioner, Community Dietitian, Chronic Disease Prevention Initiative Coordination, Dietitian – Diabetes Education, Nurse Educator, Services to Seniors Outreach, an Audiologist, Physiotherapist, Wellness Facilitator, Ambulance Coordinator, and three Primary Care Physicians.

## Fire Services

Beausejour Brokenhead Fire Department is made up of a dedicated group of paid on-call volunteers and provides protection for the communities of the Town of Beausejour, Garson, Tyndall and the RM of Brokenhead.

## Royal Canadian Mounted Police

Royal Canadian Mounted Police (RCMP) serves the Town of Beausejour and RM of Brokenhead. With a detachment located in Beausejour, the RCMP can assist with services such as criminal record checks,

firearm enquiries, reporting a crime, special occasion licenses and more.

## Joint Local Emergency Response Control Group

The Town of Beausejour and the Rural Municipality of Brokenhead have come together to form the Joint Local Emergency Response Control Group (JLERCG).

Through courses and mock disaster exercises, the JLERCG is continually preparing itself to handle any emergency or disaster that could happen in Beausejour or its surrounding area. Scenarios have been reviewed and resources have been inventoried over the last few years to keep the Emergency Plan up-to-date.

## Utilities

### Manitoba Hydro

With electricity rates amongst the lowest in North America, Manitoba is fortunate to have an abundance of safe, reliable, and affordable energy.

### Garbage & Recycling

Town of Beausejour residents have weekly curbside waste and recycling pickup services, as well as access to the Oakwood Transfer Station and Libau Landfill due to agreements with the RM of Springfield and RM of St Clements. Garbage tags are required and can be purchased from the Town of Beausejour office.

Tyndall-Garson residents also receive weekly curbside collection services for garbage and recycling. Garbage stickers are required and can be purchased from the RM of Brokenhead office.

Private waste disposal services are available for other residents of the RM of Brokenhead and they also receive access to the Oakwood Transfer Station and RM of St Clements Landfill & Transfer Stations due to agreements with the RM of Springfield and RM of St Clements. Garbage tags are required and can be purchased from the RM of Brokenhead office. A recycling facility is also located within the RM of Brokenhead office yard that is open to RM residents to dispose of recycling and e-waste materials only.

### Water & Sewer

The Town of Beausejour is pleased to offer service through the new reverse osmosis-based water treatment plant. Tyndall-Garson, situated within the RM of Brokenhead, is also serviced by a Water Treatment Plant located in Henryville. RM of Brokenhead residents located outside of these areas are situated

upon the Aquifer, which is where the two water treatment plants access their water as well. Rural residents have access to well water and private septic providers.

### Internet & Telephone Services

Our region has recently seen expansion of high-speed internet options through Xplore, Valley Fiber, High-Speed Crow and Starlink, providing residents with quality and reliable internet.

### Transportation

Many local residents find that having access to their own vehicle is the most convenient option. In fact, just over 90% of RM of Brokenhead residents, and 83% of Beausejour residents state that their main mode of

transportation is through a private vehicle. However, there is also Eastman Taxi Service as well as Beausejour Handivan that provides door to door rides to older adults and anyone with a temporary or permanent impairment that limits their mobility.

Through the development of active transportation paths to promote healthy lifestyles, residents within Beausejour are also encouraged to enjoy these paths and sidewalks by walking or biking around town.

Further information about the resources and services available within the RM of Brokenhead and Town of Beausejour can be found on their websites.

[rmofbrokenhead.ca](http://rmofbrokenhead.ca)  
[townofbeausejour.ca](http://townofbeausejour.ca)





# EXPLORE BEAUSEJOUR BROKENHEAD

Often referred to as the “gateway to the Whiteshell”, Beausejour Brokenhead offers year-round activities for locals and tourists alike. The welcoming community boasts unique events, peaceful natural spaces, and a vibrant history that is showcased throughout the area.

With countless ways to connect with the community and experience all that Beausejour Brokenhead has to offer, there's a little something available for all interests and age ranges.

## Brokenhead River Recreation Commission

The Brokenhead River Recreation Commission (BRRC) strives to enhance the quality of life, health and well-being of individuals and communities through the promotion of recreation, leisure programs and opportunities throughout Beausejour Brokenhead. These year-round activities range from day camps, fitness classes, courses, art classes, and so much more.

## Trans Canada Trail



With motorized and non-motorized paths, there are miles of trails for residents to walk, bike, ride off-road vehicles, or horseback ride in the summer and ride snowmobiles or ski in the winter.



## Train Whistle Park & The Rail Trail

Located in the heart of Beausejour, The Rail Trail is a former rail line turned into a multi-use pathway. With a train caboose as a key point of

interest, the path is lined with beautiful trees and flowers. Located on Pacific Avenue and Third Street South in Beausejour.

## Wally Chryplywy Nature Park

Located on the southwest side of Beausejour, this nature park features about 5km of trails that allow for walking, hiking, biking, bird watching, and cross country skiing depending on the season. This secluded and peaceful nature park is located on First Street South and James Avenue in Beausejour.

## Daylily Gardens



The Beausejour Daylily Gardens are a crown jewel in the community, offering a source of pride and a place of peace and beauty to both locals and tourists. It is recognized internationally as the coldest American Hemerocallis Society (AHS) display garden on the planet, and the only AHS display garden on the Canadian Prairies. The gardens are conveniently located on First Street, directly off Highway 44, welcoming you as you enter the Town of Beausejour.

## Summer Farmers Markets

There sure is no shortage of Farmers Markets during the warmer months in Beausejour Brokenhead. The home-grown and home-made products from our local makers, bakers and farmers truly are second to none.

## Manitoba Glassworks Historic Site

Beausejour is home to the first glass container factory in Western Canada. Founded in 1906, at its peak the Manitoba Glass



Works employed approximately 350 workers, and eventually was purchased in 1913, and relocated to Redcliff, Alberta. The Factory Site remains, and was designated

as Provincial Heritage Site #41, on September 27, 1989. No buildings remain but the concrete foundations can still be seen, located off James Avenue in Beausejour.

## Canadian Power Toboggan Championships/Co-Op Community Complex

A state of the art racetrack that has the world's fastest and safest 1/2 mile ice oval track is located in the Beausejour community. Snowmobile races can exceed speeds of 170km/hour! Over 100 racers come from all around North America to take part in the elite Canadian Power Toboggan Championships. The track is also home to many special events throughout the year, from turf drags to outdoor concerts.



## Shades of the Past Annual Car Show

Beausejour's Park Avenue will be open to pedestrian traffic only and filled with classic cars from every



era making this a must-see event for car enthusiasts. In previous years, this annual show saw over 700 cars entered!

## Double B Ag Festival

This annual event is held in early September, and is one of Beausejour's biggest events that draws people in from all over. Featuring rodeo competitors from within and outside of the region, and plenty of other activities like a pancake breakfast, pony rides, agricultural displays, antique tractor displays, a saloon, mutton busting, fireworks, a barn dance with a live band, and much more.



## Haystack Productions

Haystack Productions is Beausejour's amateur theatre group and is an active member of ACT (Association of Community Theatres of Manitoba Inc.). Their goal is to promote theatrical arts for the entertainment and enrichment of the Beausejour area community through the production and performance of plays, musicals and improvisational theatre.

## Brokenhead River Regional Library

Striving to inspire lifelong learning, library services are available free to residents or property owners of the RM of Brokenhead, the Town of Beausejour and any students of the Edward Schreyer School, Beausejour Early Years School, Happy Time Nursery School, or Gillis School.

## Pioneer Village Museum

Established in 1967, the Pioneer Village Museum recreates a small rural Manitoba community in the early 1900s. Housed within the grounds is a home, railway station, barbershop, blacksmith shop, school, community hall, and store, just to name a few.



## Sandy Saulteaux Spiritual Centre

Sandy-Saulteaux Spiritual Centre is a place of spirit where both Indigenous and Christian spiritual beliefs are respected, shared and understood. From the strength of their Elder's wisdom, SSSC fosters teachings of respect, healing, and wholeness among all peoples and with all of creation. Located on 36 peaceful acres of wooded parkland beside the Brokenhead River, one mile east of Beausejour.



## Recreation Facilities

Beausejour offers a Sportsplex with activities such as hockey and curling, an outdoor pool, baseball diamonds,

a skateboard park and the Brokenhead River Community Hall. Garson Centennial Community Hall, Tyndall Village Community Centre, and Garson Arena are also available for residents around the RM of Brokenhead, with community events running on a regular basis. Events include the Annual Garson Car Show, craft shows, pancake breakfasts, meat bingo, and a variety of other festivities designed to bring our community together.

## Beausejour Splash Pool Aquatic Centre

Our seasonal aquatic centre located within Beausejour offers swimming lessons as well as specialized training. Splash pool amenities include: 25-meter junior Olympic swimming pool with 5 lanes, kiddie pool, water slide, hot tub, change rooms, diving board, and pergola.



## Tyndall Village Community Centre Splash Pad

Operating during the summer months and complete with changerooms and washroom facilities, this splash pad located in Tyndall is free for all residents to enjoy.



## Snowmobiling

A popular activity among residents with trails all around the region. The Town of Beausejour is snowmobile friendly

and has designated routes to and from Town for snowmobilers to conveniently access restaurants and rest stops. The Brokenhead Trail Blazers maintain 230km of trails through the region for all to enjoy. A network of snowmobile trails also crosses the Mars Hills Wildlife Management Area for a scenic ride through nature.

## Golfing

Located just outside the Town of Beausejour, the Rivers Edge Golf & Country Club is a beautiful 9-hole golf course surrounded by forest and wildlife. The Brokenhead River winds through the property, making it a unique place to play a round of golf. You'll also find the 18-hole Mars Sandhills Golf Course situated on 10,000 acres of Wildlife Management Area that caters to all ages and skill levels in a beautiful, natural setting.

## Just a Short Drive to Whiteshell Provincial Park

Less than an hour drive from Beausejour, Manitoba's Whiteshell offers some of the best cabin country in the world. With numerous trails for hiking, snowshoeing or skiing, fishing spots, a variety of other outdoor activities and resort accommodations for weekend getaways, Whiteshell Provincial Park is a must-see.

## Local Directory

The Beausejour Brokenhead region boasts several accommodation options including hotels, campgrounds, and cabin rentals, eat-in or fast-food restaurants & lounges, locally owned shops, and more that make it a great location for visitors. For a full list of current businesses in the area, visit [bbdbiz.ca/business-directory](http://bbdbiz.ca/business-directory) or scan the QR code.





# BEAUSEJOUR BROKENHEAD DEVELOPMENT CORPORATION

Beausejour Brokenhead Development Corporation (BBDC) has served Beausejour Brokenhead for over 30 years. BBDC was formed in 1986, following the regional partnership between the Town of Beausejour and the Rural Municipality of Brokenhead with a mission to promote and attract more investment and growth to the region.

The goal of the BBDC is to facilitate, develop, and implement the creation of economic

development opportunities, in a social and sustainable environment to promote our community as the best place to live and to do business.

We are focused on tourism growth, business attraction and expansion, new business development, investment attraction, supporting organizations and market research.

**Mission** - *The Beausejour Brokenhead Development Corporation (BBDC) is a community based, non-profit organization that facilitates, promotes and markets economic development to enhance growth and quality of life within Beausejour Brokenhead.*

**Vision** - *The Beausejour Brokenhead Region is a vibrant, sustainable, strong family-oriented age-friendly community with an abundance of business, housing, health, education, and services.*



## VALUE STATEMENTS

### Teamwork

Through unity, we can achieve more together. Our actions are based on trust, responsibility and decisions which we reach and realize together by using the potential and professionalism of all members of our team.

### Change/Forward Progress

We embrace change and are forward thinking in our approach.

### Collaboration/Partnerships

We build relationships with like-minded partners and team members to foster new opportunities.

### Communication

We strive to keep members and the public informed and we value input from all.

### Leadership

We provide clear vision, goals and response to economic opportunities and challenges.

#### Contact us with any questions or inquiries:

**Beausejour Brokenhead Development Corporation**  
Economic Development & Marketing Officer  
204-268-4514 | [bbdc@bbdcbiz.ca](mailto:bbdc@bbdcbiz.ca)  
639 Park Avenue  
Box 1741 Beausejour, MB ROE0CO

**Rural Municipality of Brokenhead**  
204-268-6700  
[admin@rmofbrokenhead.ca](mailto:admin@rmofbrokenhead.ca)  
72013 Road 42E  
Box 490, Beausejour, MB ROE0CO

**Town of Beausejour**  
204-268-7550  
[townoffice@townofbeausejour.com](mailto:townoffice@townofbeausejour.com)  
639 Park Avenue, Beausejour, MB ROE0CO



**BEAUSEJOUR  
BROKENHEAD**  
DEVELOPMENT CORPORATION